

3 Bedroom, 2 Bath
Approx. 1,361 sq. Ft.

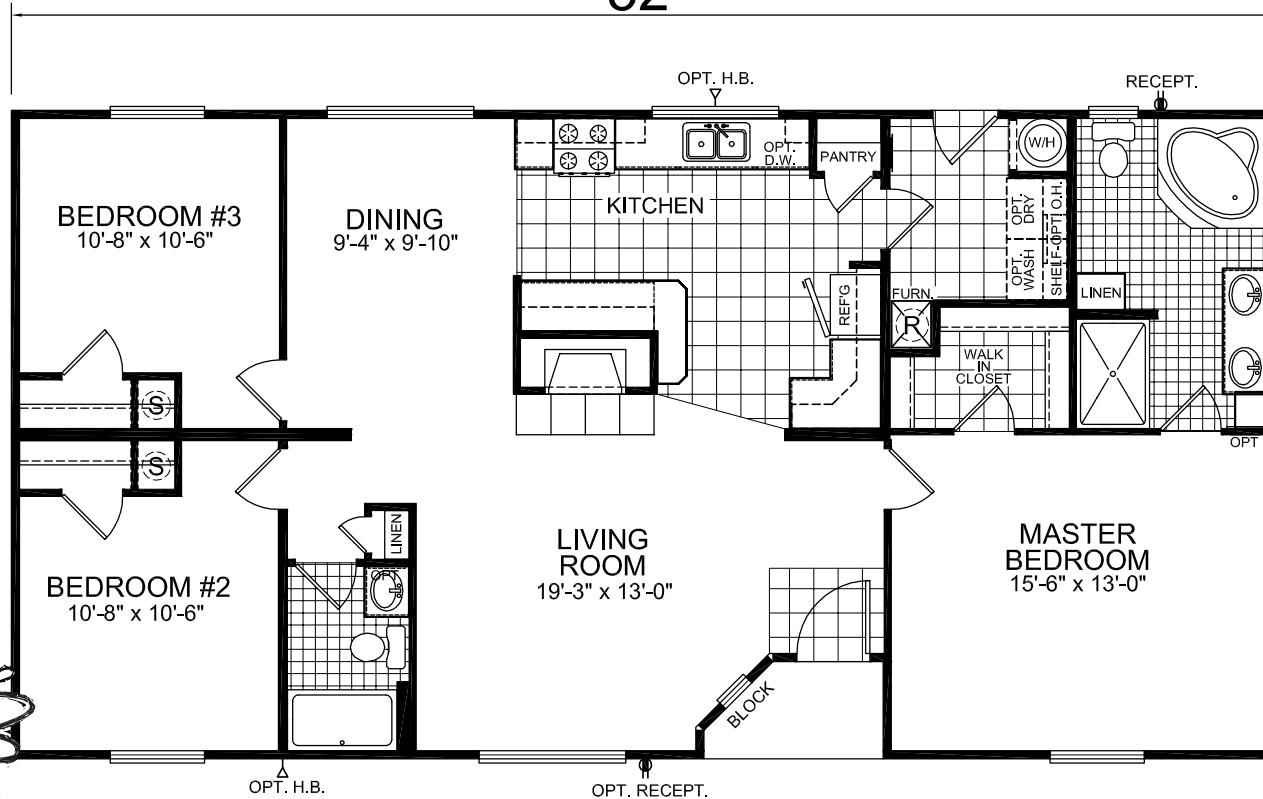


Last Updated: 2-16-2011

26'-8"

52'

**ALSO
AVAILABLE
AS A 32'
WIDE MODEL**



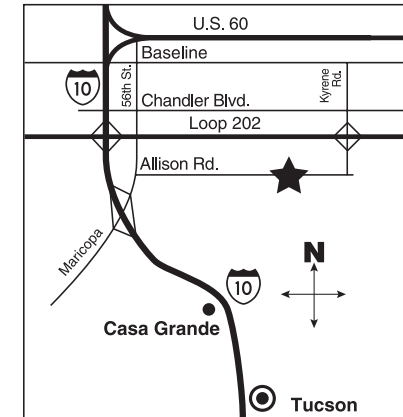
**“Complete Home” Package
Includes the Following Upgrades**

- QUALITY GE APPLIANCES
- 22 CU. FT. SIDE-BY-SIDE FRIDGE W/ICEMAKER
- SPACESAVER MICROWAVE
- DISHWASHER
- DELUXE GAS RANGE
- S.L. FAUCET W/SPRAYER
- FLUORESCENT LIGHTS (2)
- PHONE JACK
- UTILITY ROOM DOOR
- CHANDELIER - D.RM.
- GLAMOUR MASTER BATH W/54" SHOWER, DUAL LAVY CORNER TUB, MIRROR W/VALANCE
- DESIGNER TUB DRAPE
- 2 SKYLIGHTS (BOTH BATHROOMS)
- MEDICINE CABINETS
- DELUXE RECESSED DORMER
- HORIZONTAL LAP SIDING (ACCENT AREA)
- ANGLED RECESSED ENTRY
- SHUTTERS F.D.S. & HITCH END
- DELUXE COACH LIGHT
- OVAL GLASS FRONT DOOR
- 2 BLOCK & WIRE'S W/FANS INSTALLED
- UTILITY ROOM CABINET W/ROD
- 1ST UPGRADE TRACKLESS CARPET
- UPGRADE FHA PAD
- DESIGNER DLX. DRAPES W/SHEERS, VALANCES IN REST OF THE HOME
- MINI BLINDS
- FIREPLACE

I authorize Factory Expo Home Centers to build my house, per this plan.
X _____
Customer Signature/Date

Factory Expo
"Factory Direct Value" HOME CENTERS

6420 W. Allison, Box 5074
Chandler, AZ 85226



1-800-965-1603

Alton CH
Champion Complete Home